

SmartWorks Pro

INNOVATION IN WIDE FORMAT SCANNERS AND SOFTWARE



Touch-Screen Capable
Scanning and Copying
Software for Professional
Imaging Applications



PROVIDES:
PRODUCTIVE WORKFLOW GIVING EASY SCANNING,
COPYING, SCAN-TO-FILE WITH ADVANCED IMAGE
RESTORATION AND COLOR MANAGEMENT



Great color straight out of the box
at a touch of a finger tip!

SmartWorks Pro

A software platform providing three discrete applications in one package - **Scan, Copier, Scan & Copy** together, suiting the requirements of both the occasional and professional user.

The intuitive **Graphical User Interface (GUI)** can be operated through either **Mouse or Touch Screen enabled displays**, providing simple working or rapid access to the wide range of new **Full Color and Image Quality Editing** features.

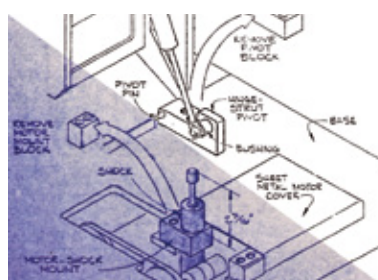


Image restoration

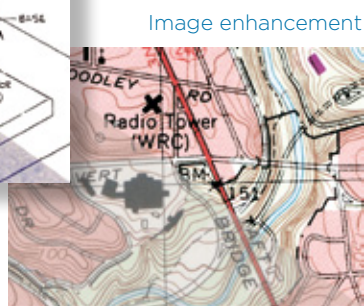


Image enhancement

Superior Productivity with Scan-Once Workflow

The unique Scan-Once Workflow allows any number of adjustments to be made in real-time after scanning the image file, which is then updated and saved without any additional scanning or operator intervention. This reduces the amount of time incurred storing and retrieving the data file, re-scanning to review changes made or refreshing the screen content. Scan-Once also limits the opportunity for potential damage to the original document, especially if the document is fragile and/or valuable.

Automated scanning using 10 Preset Filters

Let SmartWorks Pro enhance your productivity by using one of the 10 Preset Filters. Designed to help the unfamiliar scanner operator get the best result from many different types of original documents the pre-set filters can be used when scanning or copying.

Simplify Large Archive Jobs

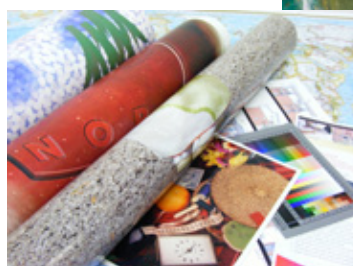
Let **SmartWorks Pro** help you manage the scanned images by using the SmartWorks Pro **Multi Page Document Manager**, it allows the operator to combine large and differing scan file

types into a single TIFF or PDF file.

Creating a multi-page document outside of the scanning process has several advantages:

- Allows operator freedom to edit and quality check each scan as they would normally
- Works with large or small files without slowing down the scanning process
- Allows JPEG, PNG, PDF (raster) and tiff, monochrome and color files, physically large and physically small files all to be built into one self-contained file
- Copes with interrupted scan flow without affecting or corrupting the whole file
- Does not require an especially powerful computer since Multi Page Document creation takes place outside of the scanning workflow
- Add new images without rescanning all the internal documents again
- Accept JPEG, PNG and TIFF images from external sources

Full Color Graphics



Complex Mapping

Files can be selected and re-ordered as necessary before saving to a multi-page TIFF or PDF document. You may also increase the throughput of your scanned documents by using the advanced **Auto Size** feature; it automatically sets the parameters of the scan to suit the size of original document. Also use the **Auto Detect Document** - this starts the scan automatically allowing the operator to concentrate on

SmartWorks – works smarter and harder

the staging of the document and preparing subsequent materials for feeding. Use the **Auto Name** feature where the operator can define the basic file name and **SmartWorks Pro** attaches the relevant scan number to the file name for each subsequent document scanned. It can also be set to provide an **Automatic Time Stamp** to each file and also includes options that control over-writing of the file. These combined features allow the operator to scan multiple sheets simply by continually feeding the scanner with new documents.

Color Management

By integrating **ICC Color Management** into SmartWorks Pro viewer, Colortrac has been able to provide a very accurate representation of scanned and printed output. SmartWorks Pro can attach profile information to each scanned image file (selectable), ensuring accurate color reproduction when reloading into SmartWorks Pro or displaying using other color calibrated viewers. **SmartWorks Pro** can capture raw RGB, Profiled RGB or sRGB data from the scanner.

Scan to AutoCAD DWF format

SmartWorks Pro now allows the user to save any scan to the popular **AutoCAD** Design Review or **.DWF format** widely used for mark-up and annotation of drawings and plans by architects and engineers. DWF images can be viewed,



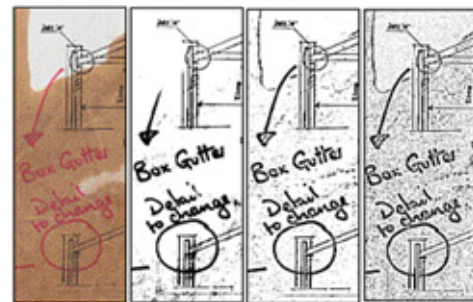
annotated or measured and freely exchanged with other users of the software. AutoCAD Design Review is freely downloadable from Autodesk. SmartWorks Pro DWF files contain raster data only.

File Size Management

User selectable file quality controls in **SmartWorks Pro** allow the scanner operator to decide the file size and image quality combination they prefer for any JPEG or PDF scan. Quality settings can be pre-set before the scan or used following any image editing operation. The quality and file compression levels for all monochrome TIF and PDF files are pre-set to maximum and use a lossless method of image compression.

The main issues relating to the quality of scan are directly related to the quality of the original document. If the original is perfect, then the scan or copy will also be good. Many originals are not perfect and many have faint hand-written annotations or are just plain worn out. This is the point where SmartWorks Pro can really help.

For a pure monochrome scan file, the image needs to be small for storage, even when it has to come from a discoloured drawing, a blueprint or a damaged or badly stained original. **Bi-tonal Thresholding** provides the easiest means of achieving this and has internal options for **Simple Thresholding** or **2D adaptive Thresholding**. 2D Adaptive Thresholding can remove varying background coloration with ease whereas Simple Thresholding is more efficient at converting previously



copied or cleaner originals.

Scan-Once allows these methods to be applied and adjusted quickly and efficiently.

Printer Management

When using the **SmartWorks Pro Scan & Copy or Copier** versions there are several different alternatives how the printer driver can be used. By using the standard **Windows™ printer driver** the output characteristics of the scanned image are defined based on the sophistication of the chosen output printer manufacturer. For some Windows printer drivers, the options for paper conservation and color profile selection can be limited. **SmartWorks Pro Printer Drivers** allow the user to create printer profiles specifically suited to the chosen output media and also to benefit from greater control over precise copy size and economical paper utilization.

For compatibility with large **CAD drafting printers** TIFF files can be held in an **Optional Hot Folder**. With this feature all scans are automatically detected and printed by the CAD printer without the use of printer drivers. (Note: CAD printer must support hot folder or RIP operation.)

Specifications

One interface - three applications	Scan Copier Scan & Copy	Scan to file only Scan to Printer only Scan to file and Copy to the printer simultaneously or Scan or Copy independantly
Mouse and Touch Screen compatible	Choose the style of operation that suits you Use the Preset Filters and a touch screen for straightforward scanning or copying operations Use the mouse for more detailed re-working of the scanned image, for modifying presets or when creating multiple document files	
Optimized Windows Printer Driver Support	Great color, straight out of the box. Use any Windows compatible printer. Integrates with any ICC profiles supplied with the Windows driver.	
Scan Once	Edit straight from the scan, as many times as you need. No need to re-scan the document every time an adjustment is required. Reduces image process time and increases productivity	
Many automatic features	Auto paper size detection. Batch Scanning. Overwrite Control options. Improved Auto Paper De-skew ¹	Auto start scanning. Auto Name / Date & Time stamp. Auto File Save.
Advanced Editing Features	Smooth de-skew - with unique left and right high-accuracy windows Extend Borders - quickly produce larger printed outputs from tightly cropped originals. 4-Vu - configure 4 different areas of the scan for high-speed post-scan inspection. High Speed Viewer with auto-pan, zoom in/out, 1:1 and separate bird's eye navigation window. 10 fully customizable Preset filters for repeatable results	
Multiple Black & White Modes	Grayscale - 8 bit, 256 levels of gray Bi-tonal (simple original). Adaptive Thresholding (difficult original) Fully Dithered (Photo, Line Art & Mixed). Can repair image information on old or badly copied and faded originals	
Total Color Management	Transform and enhance all aspects of scanned images and output. Profile scanner and printer using IT8-ICC color technology for best possible reproduction. Display images on a calibrated screen (screen calibration equipment not included). Save scans with embedded RGB profile. Create printer profiles for your own ink and paper consumables to produce the best possible color output.	
Functionally Adaptive User Interface	Simple set-up of scan or copy for non-specialist users. Quick access to extensive editing tools for dedicated scan professionals	
Fully Indexed Help File	Fully translated and searchable on relevant subject matter Subject related help information	
Supported File Formats	TIFF, TIFF packed bits, TIFF LZW, TIFFG3, TIFFG4, JPEG ² , JPEG2000 ² , PDF ² , PNG Multiple Page Document manager for TIFF and PDF files, AutoCAD DWF ⁴ .	
Maximum Scan Length	TIFF format - Primary scan TIFF data (internal to program) cannot exceed 4GB approximating to 83ft (25m) @ 200dpi or 20ft (6.3m) @ 400dpi for a 34in (841mm) wide RGB scan. Narrower scan widths will yield longer scan lengths for same dpi. JPEG & PDF - limited to 65535 dots in paper direction per scan or 4GB of primary scan data whichever occurs first. Final scan files will be smaller than 4GB. Longer documents can be created in PDF or TIFF format as continuing separate pages in a single file using the SmartWorks Pro Create Multi Page document function.	
Maximum Copy Length	Manual size mode - Copy length determined by printer manufacturer. Auto size mode - Varies according to printer (usually less than manual mode).	
10 Preset Filters	Setup for quick selection of preferred key scanning parameters for the most common document types	
Multi Page Document Manager	Allows JPEG, TIFF, PDF (1 page) and PNG, monochrome and color files, physically large or small to be built into one self-contained PDF or TIFF file	
Operating System	Windows XP, Windows Vista, Windows 7 and Windows 8 operating systems ³	
Notes	1. Automatic Paper Deskew is only available in conjunction with SmartLF Gx+ scanners 2. User configurable image quality and file size ahead of scan and after editing. B&W pdf images use fixed compression for greater image quality. Color images use variable JPEG compression for smaller images sizes. 3. See System Requirements for more information on XP, USB3 and computer specifications 4. User-controllable compressed raster scan format. Only a single scan application or scanner utility program can be operated at any time.	

For full details of host system requirements please go to: http://www.colortrac.com/support/system_requirements/
Colortrac Ltd makes no warranty of any kind with respect to the information contained in this document and reserves the right to change specifications without notice. Colortrac and SmartLF[®] are trademarks of Colortrac Ltd. All other trademarks are the property of their respective owners.
Copyright © 2013 Colortrac Ltd. Colortrac SmartLF Wide Format Scanners are designed by Colortrac and manufactured in their ISO-9001:2000 certified manufacturing plant.

VERSION: 2013.01.06

YOUR COLORTRAC STOCKIST

Colortrac Limited

COLORTRAC HQ AND FACTORY
3-5 Brunel Court, Burrell Road,
St Ives, Cambs PE27 3LW, UK
Tel: +44 1480 464618
Fax: +44 1480 464620

Colortrac Inc.

4431-A Brookfield Corporate Drive
Chantilly, Virginia 20151, USA
Tel: +1 703 717 5631
Fax: +1 703 717 5361

Colortrac Limited (Beijing)

Room 1208, ZhongGuanCun Technology Development
Building C, No.34 Zhong Guan Cun South Street
HaiDian District, Beijing 100081, P.R. China
Tel: +86 (0) 10 62124936
Fax: +86 (0) 10 62124770

Colortrac Japan

12th Floor, 1203
Yokohama Creation Square
5-1 Sakae-Cho
Yokohama-Shi, Kanagawa-ken
Japan 221-0052
Tel: +81 (0) 45 548 6991
Fax: +81 (0) 45 548 6992